

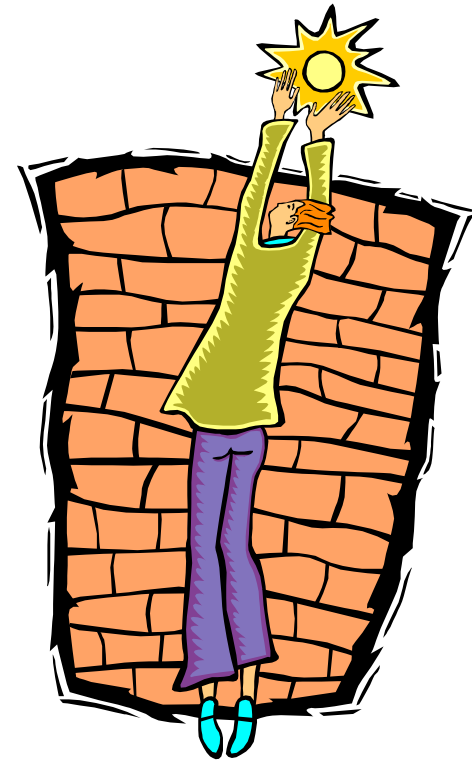
# Bishop Wood C of E Junior School

Welcome to Year 2 Parents  
December 2015



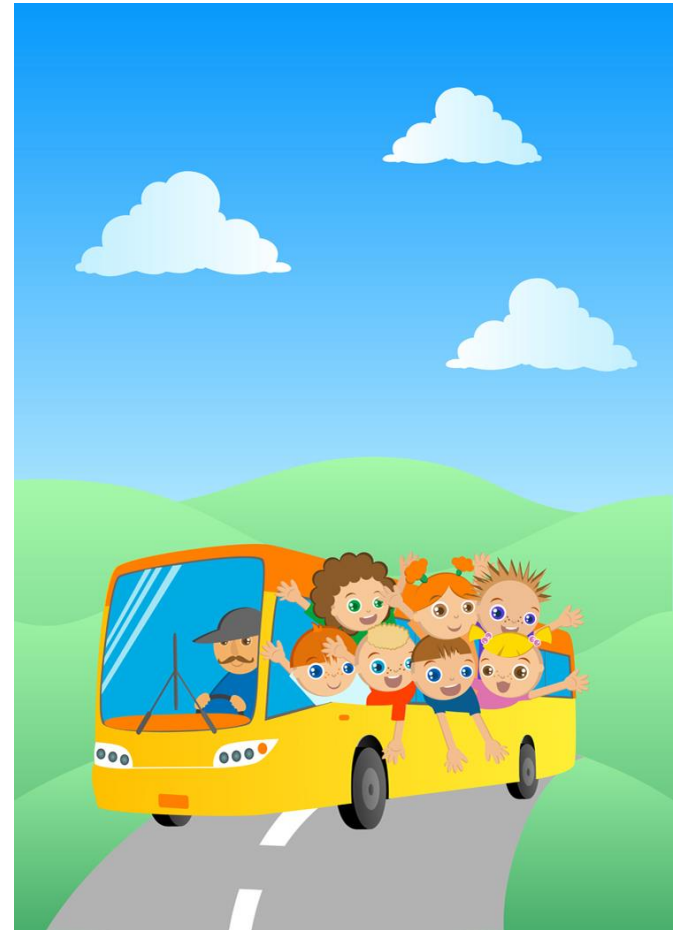
# Guiding Principles

- Priority to provide education of the highest possible quality within the supportive Christian context of the school.
- Happy, hardworking, well disciplined pupils who have a clear sense of right and wrong.
- High expectations regarding work and behaviour.
- Parents consulted and informed, feeling free to question, seek clarification, affirm the work of the school and influence change.
- Holistic, all round development of your child.
- Privilege and responsibility.



# The Hallmarks of the School

- High expectations = high standards
- Family orientated community.
- Every child known, loved, respected for their unique, wonderful contribution.
- Compassion, forgiveness, reconciliation.
- Success is shared and difficulties are talked through.

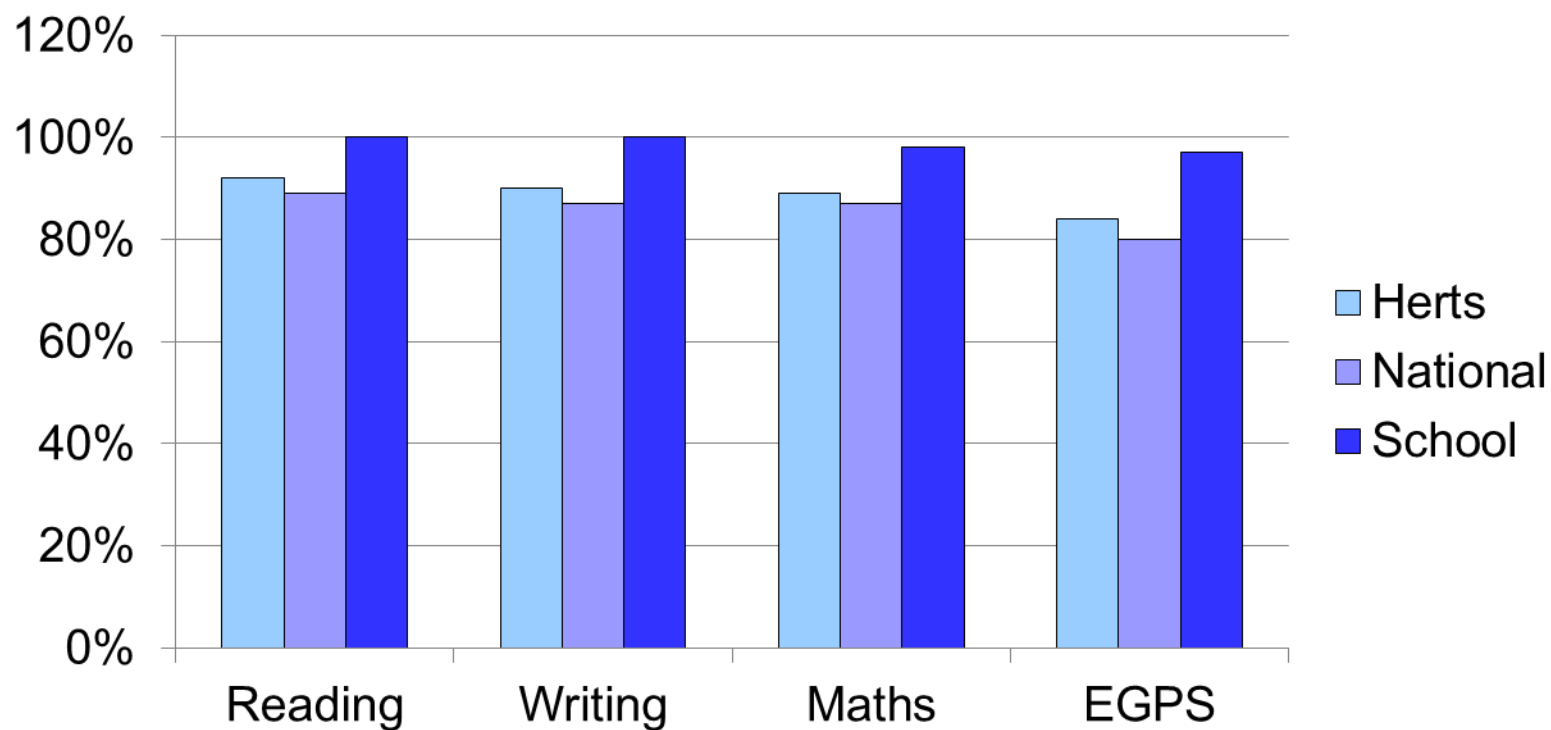


# Our Strengths

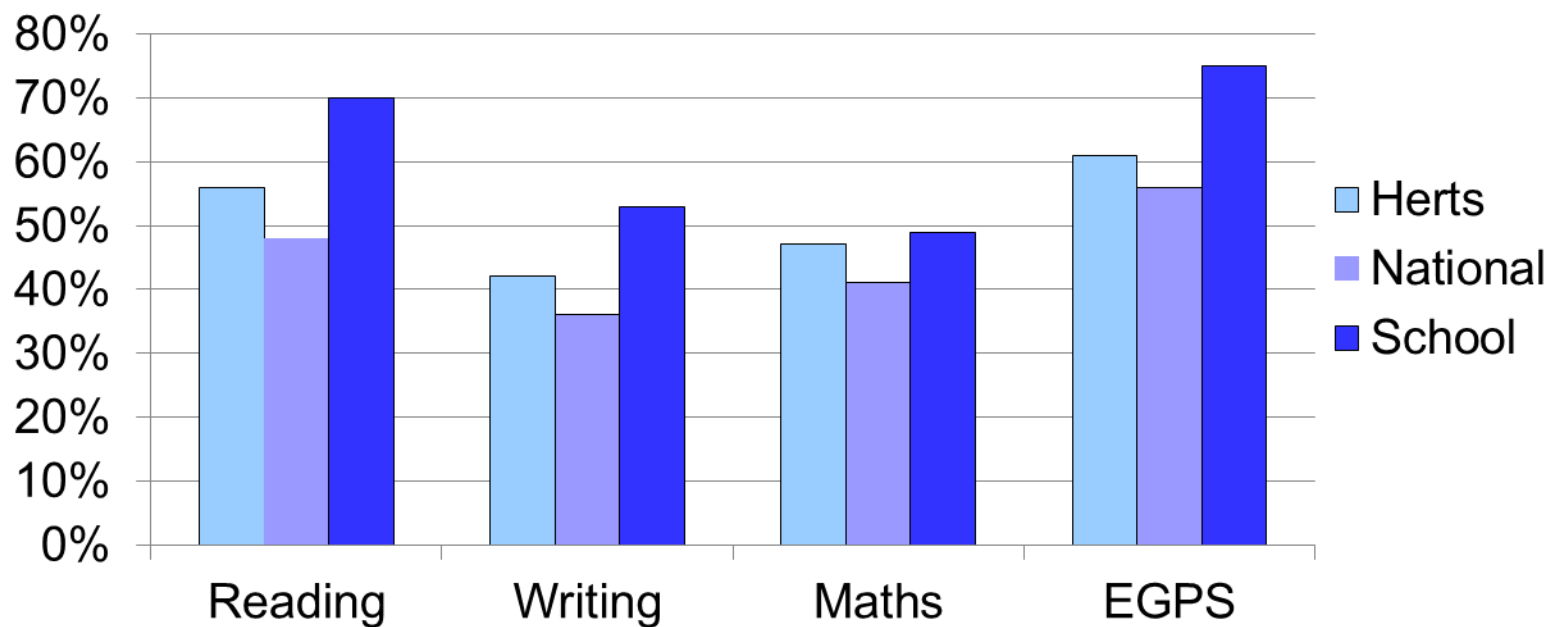
- Standards well above the national and local average. Attainment currently very high.
- Skilled staff with additional qualifications.
- Increased provision for Literacy and Numeracy support.
- Science Primary Science Quality Mark.
- Pupils' contributions towards local community initiatives.
- Pupils' personal development and wellbeing.
- Care guidance and support for children and families.
- Committed HT, Leadership Team and Governors give a strong Christian ethos which underpins the school.



# Level 4+ (national standard)

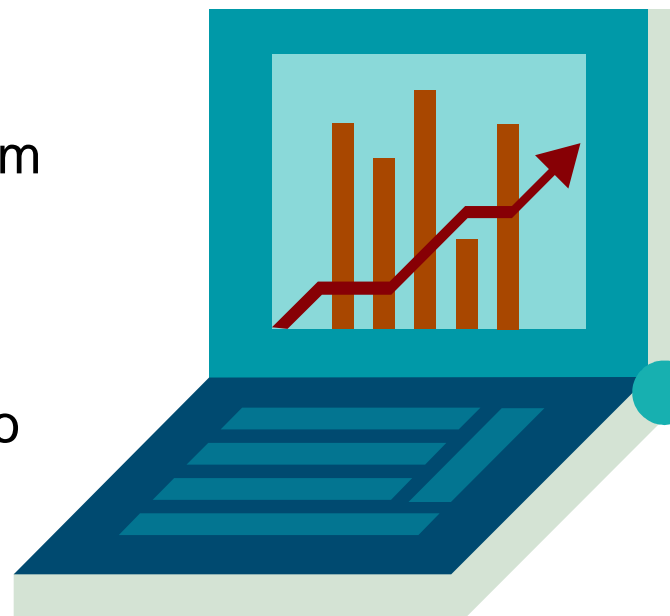


# Level 5+ (above national)



# What are we trying to improve?

- Reviewing and adapting provision for vulnerable learners in order to accelerate progress.
- Embed an enriched primary curriculum assimilating all of the changes required with the greater level of challenge.
- Develop further challenge in Maths so more pupils make accelerated progress.
- Improve and enhance space and communication.



# Meeting individual needs

- High standards in both work and behaviour and the pursuit of excellence
- Regular assessment tracks and monitors pupils' progress
- Pupil voice activities inform staff of adaptations that need to be made to the curriculum.
- INCo provides advice and support for SEN pupils, teachers and their parents.
- Close links established with external agencies and multi-disciplinary teams
- Large team of support staff who are skilled in providing support.
- Transition programmes organised with vulnerable Year 6 pupils and Year 2 pupils.
- Wide range of intervention programmes to support the improvement of literacy and numeracy skills.





# Partnerships (parents & community)

- Bishop Wood Buddies organises fund raising activities. Ongoing support with wide variety of activities.
- Strong associations with local schools
- Improvements to the playground facilities through Grass Roots Company and School Association.
- Close relationships with Goldfield School and Tring School to ensure smooth transition.
- Visits to the Parish church and reciprocal visits from the Tring Team Ministry enhance spiritual development.
- Participation in projects facilitating community cohesion.
- Inclusion Working Party and coffee mornings.



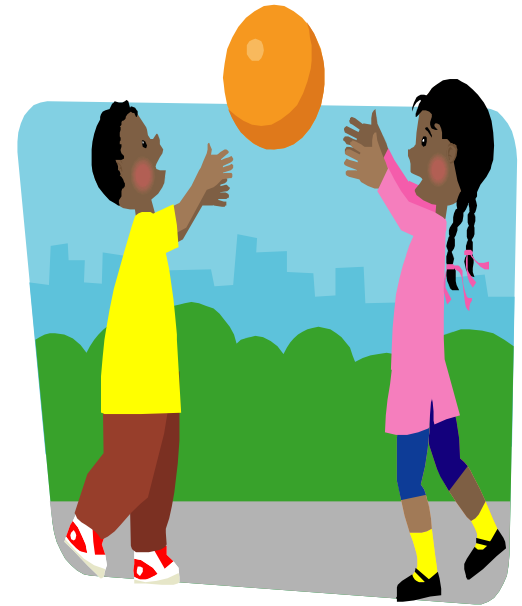
# How do our pupils help us to improve?

- Pupil views are sought and acted upon.
- Active School Council. Pupils encouraged to contribute to the change and improvement agenda.
- Subject Leaders undertake a pupil voice activity to make appropriate adjustments to the curriculum.
- Suggestions were made by the children about how playtimes could be improved.
- They have also influenced the choice of visitors and visits.



# Healthy, safe, well-supported pupils

- PHSE and Citizenship programmes promoted.
- Children taught strategies to develop assertiveness.
- Successful in the Healthy Schools Accreditation Scheme.
- A School Travel Plan is active and accredited.
- Annual "Fun Fit and Fruity Week."
- Playground Pals and Sports Leader programmes are effective.
- "Building Learning Powers" underpins resilience of learners.
- Supervised trips to theatres, sports activities and educational visits seek to reinforce the pupils' wider experience of life.



# Activities available to pupils

- Sports activities: swimming, football, rugby, cricket, athletics, netball.
- Peripatetic Music teachers provide lessons in guitar, piano, flute and clarinet.
- Extra curricular clubs for Art, Gardening, Cross Stitch and Drama are very popular.
- Visits by drama, dance and music workshops to enhance the curriculum.
- Year groups visit places of interest which enhance curriculum subjects.
- Year 6 pupils attend a week's residential Study Tour to Norfolk and pupils from Year 4 participate in a two day residential at Cuffley Camp
- Whole school productions take place regularly.
- Pupils volunteer for School Council, Playground Pals and Sports Leaders, School Shop



# What do our pupils do after leaving this school?

- Majority of pupils transfer to Tring School.
- Small number take the 11 plus examination and transfer to the Buckinghamshire Grammar School system.
- Small number of pupils occasionally transfer to local independent schools.
- Some pupils return to the school to assist with extra curricular activities or undertake work experience placements.
- Some pupils return as teachers!
- Smooth transition to the secondary school is facilitated through a variety of activities.

