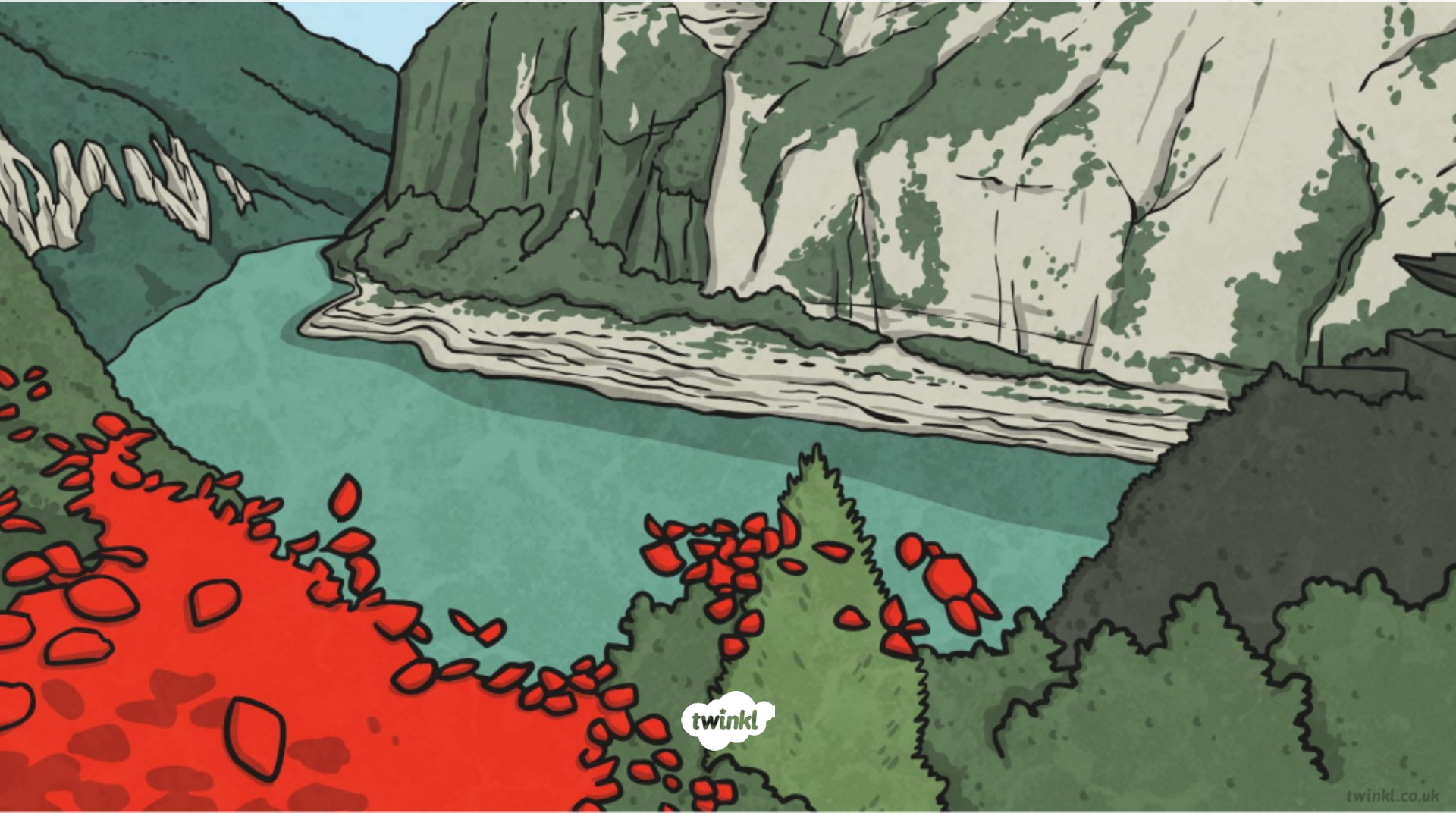


# Modal Verbs



**Modal verbs** are auxiliary verbs which cannot usually work alone.  
They are used with a main verb.

These are ~~an~~ modal verbs:

might

will

should

may

would

can

could

must

shall

ought to

**Modal verbs** make questions by inversion.

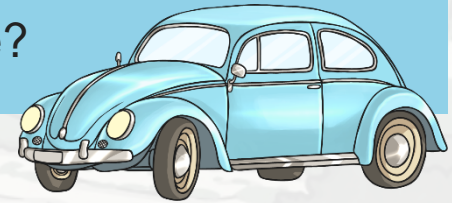
She **can** go out.

**Can** she go out?



We **could** drive there.

**Could** we drive there?



Children **should** eat fruit.

**Should** children eat fruit?



**Modal verbs** can be used to show how possible something is, or how likely it is to happen/have happened.

For example:

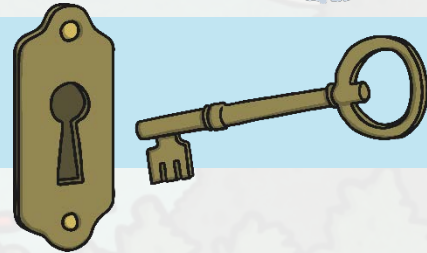
He's very late. He **could have missed** the train.



It's snowing so it **must be** very cold outside.



They **will lock** the windows when they go out.



Can you spot the **Modal verbs** used to show **possibility** in these sentences?

Mum **might** take us swimming after school.



You **could** eat a banana instead of those sweets.



“Hurry up! We **will** be late!” said Dad

Hurry up!

We **can** go the other way – it’s quicker.



You **ought** to go to bed earlier.



Which **Modal verbs** are missing from these sentences?

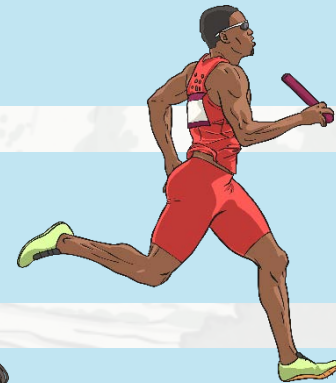
You **must** be hot in that thick coat.



If it's dry, **shall** we play outside?



He's so fast, he **should** win the race.



I'm fed up with my long hair. **might** have it cut.



Did you choose these **modal verbs**?  
Which others could you have used?

**Modal verbs** can also be used to show:

### advice or obligation

Pupils **must** wear a uniform.

You **should** not smoke.



### habits

I **will** often have cereal for my breakfast.

We **shall** always enjoy a walk in the park.



### permission

May I leave a few minutes early?

Could we go to the post box on the way?

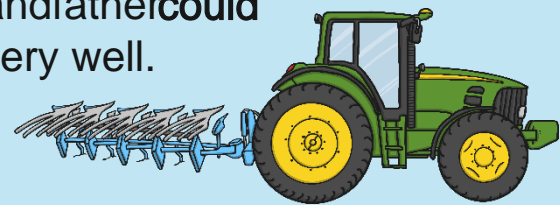
Please can we have an ice cream?

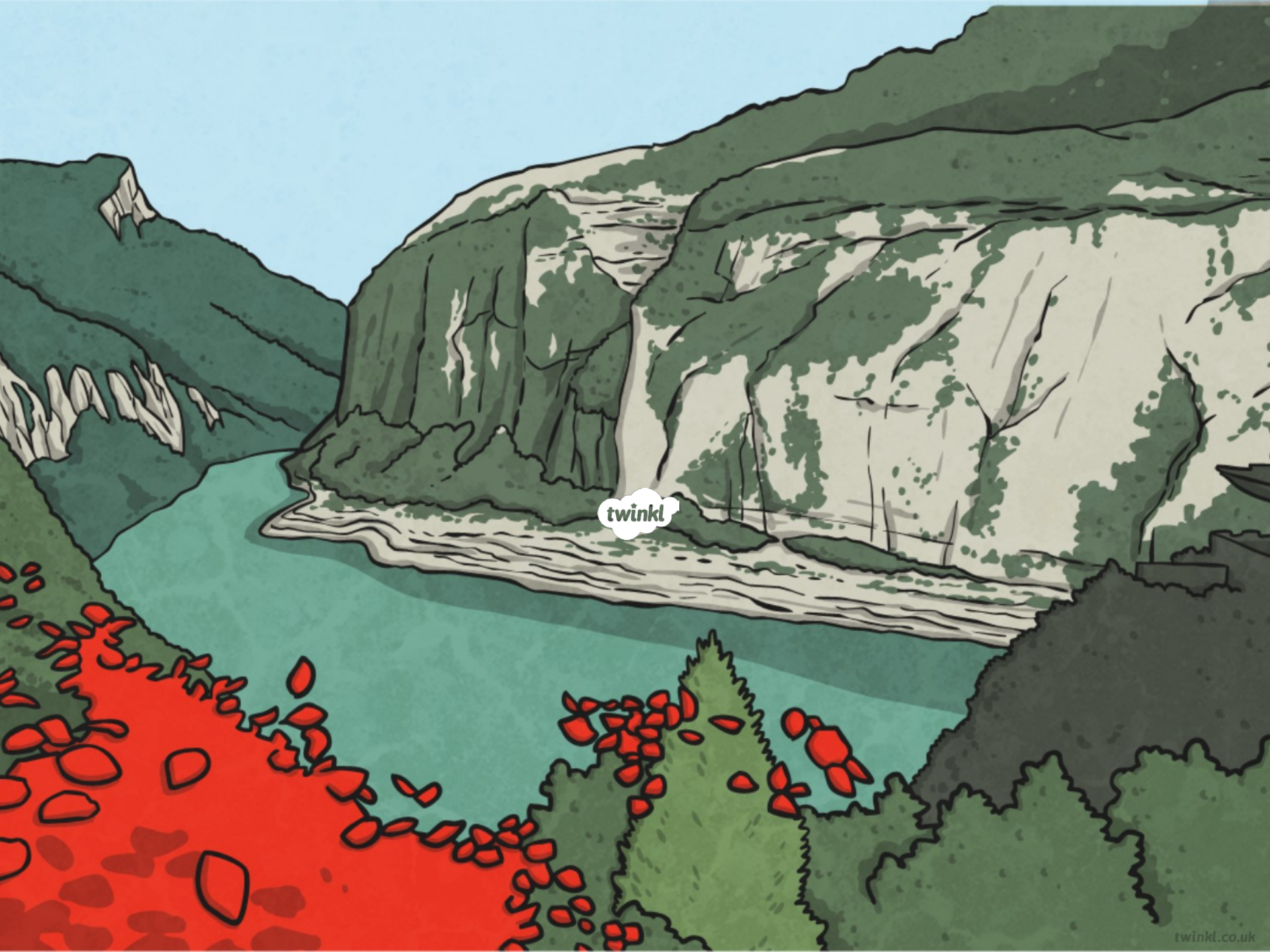


### ability

I **can** drive a tractor.

My grandfather **could** draw very well.





twinkl